

Appendix

to

§ 3-15 and § 17-3 of the Plan - Trading Limits

I. Excluded trading areas, cf. § 3-15, subparagraph 3 (Map No. 1)

1. The northern hemisphere

1.1 European-Arctic waters

The waters north of the 72nd parallel, the area extending 100 nautical miles from the baseline of East Greenland and the area extending 50 nautical miles from the baseline of Jan Mayen. However, the limitation does not apply to voyages made directly to Longyearbyen and Sveagruven on Svalbard when the ship passes the 72nd parallel no earlier than 15 May, and departs from these places no later than 31 October. Ships making such voyages shall pass no closer than 20 nautical miles and no further than 100 nautical miles west of Bjørnøya.

1.2 Euro-Asian Arctic waters

The waters north of the Euro-Asian continent east of 35 degrees east longitude.

1.3 East-Asian waters and the Bering Sea

East-Asian waters north of the 46th parallel to 170 degrees east longitude and the Bering Sea, including voyages to the Aleutian Islands.

However, the limitations do not apply to ships passing through these waters on voyages between places within the ordinary

trading areas. In respect of the Bering Sea, the limitations do not apply to passages through Unimak Pass and west of Buldir Island, provided that the ship is equipped with up-to-date navigation equipment for these waters.

1.4 North and North-eastern American waters and the waters off West Greenland

The waters north of the 60th parallel and waters which can only be reached by crossing this line. The St. Lawrence Seaway and the North American Great Lakes during the periods of time when the authorities do not allow sailing in the canals.

2. The southern hemisphere

The waters south of the 50th parallel and the areas extending to 50 nautical miles from the baselines of Kerguelen, Crozet Islands and Prince Edward Islands. However, the limitation does not apply to voyages to Patagonia, Chile and the Falkland Islands, nor to passages through the waters south of the 50th parallel on voyages between places north of this latitude. Such voyages shall not be made more than 50 nautical miles south of the baselines of Chile, Patagonia and the Falkland Islands.

II. Conditional trading areas, cf. § 3-15, subparagraph 2

1. The Baltic Sea (Map No. 2)

- a) The Gulf of Bothnia north of the line Umeå - Vasa during the period 15 December - 15 April.
- b) The Gulf of Finland east of 25 degrees 45 minutes east longitude during the period 8 January - 15 April.
- c) The waters east of the line Dagerort - Lyserort during the period 1 January - 31 March.

2. Labrador (Map No. 3)

The waters from Cape St. Charles to the 60th parallel, all year.

3. Gulf of St. Lawrence and St. Lawrence River (Map No. 3)

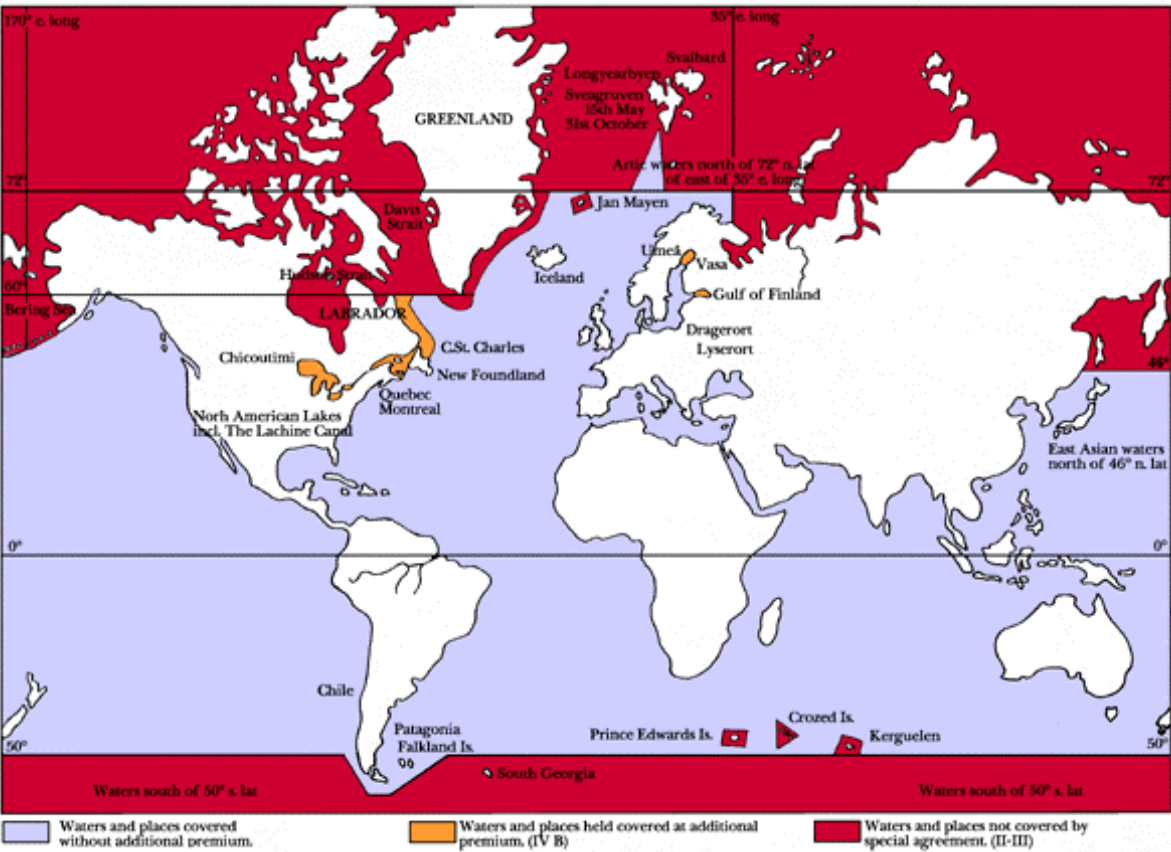
- a) The waters within lines drawn between Port Mulgrave - Port Hastings (Strait of Canso), Cape North - Cape Ray (Cabot Strait), Cape Bauld - Cape St. Charles (Strait of Belle Isle) and Baie Comeau - Matane (St. Lawrence River) during the period 21 December - 4 April.
- b) The waters from the line Baie Comeau - Matane up to and including the port of Montreal during the period
6 December - 15 January.
16 January - 15 March.
16 March - 4 April.

4. St. Lawrence Seaway and the North American Great Lakes (Map No. 3)

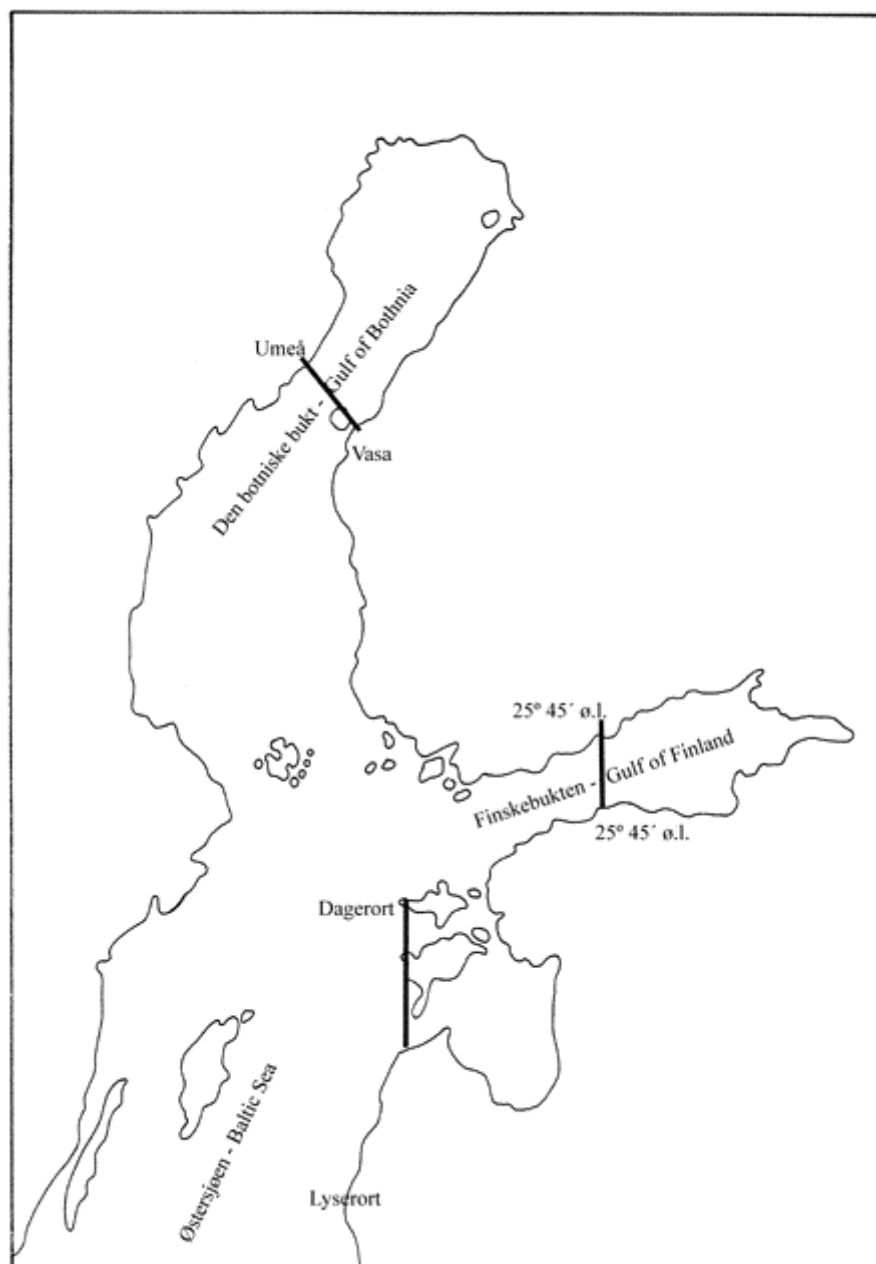
The area above Montreal from the opening of the canals until 30 November.

The area of Montreal and below after 30 November.

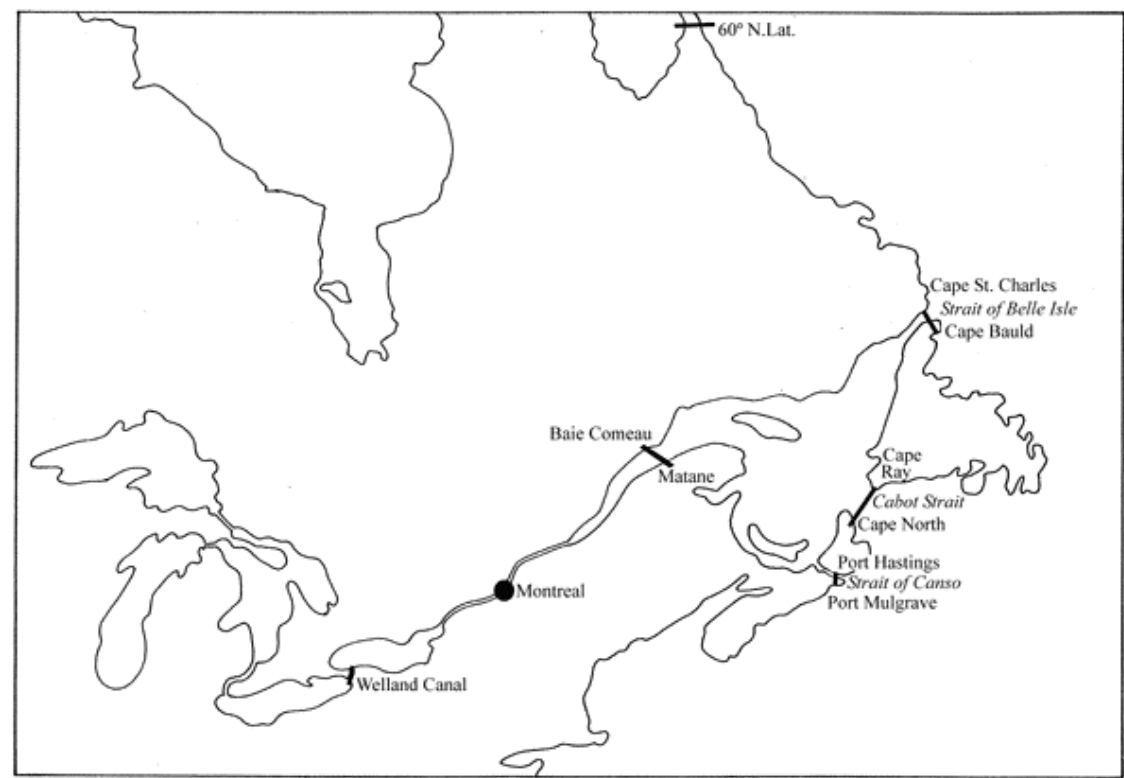
Map No. 1



Map No. 2



Map No.3



III. Excluded trading areas applicable to the insurance of fishing vessels pursuant to Chapter 17, cf. § 17-3 (Maps No. 4, 5 and 6)

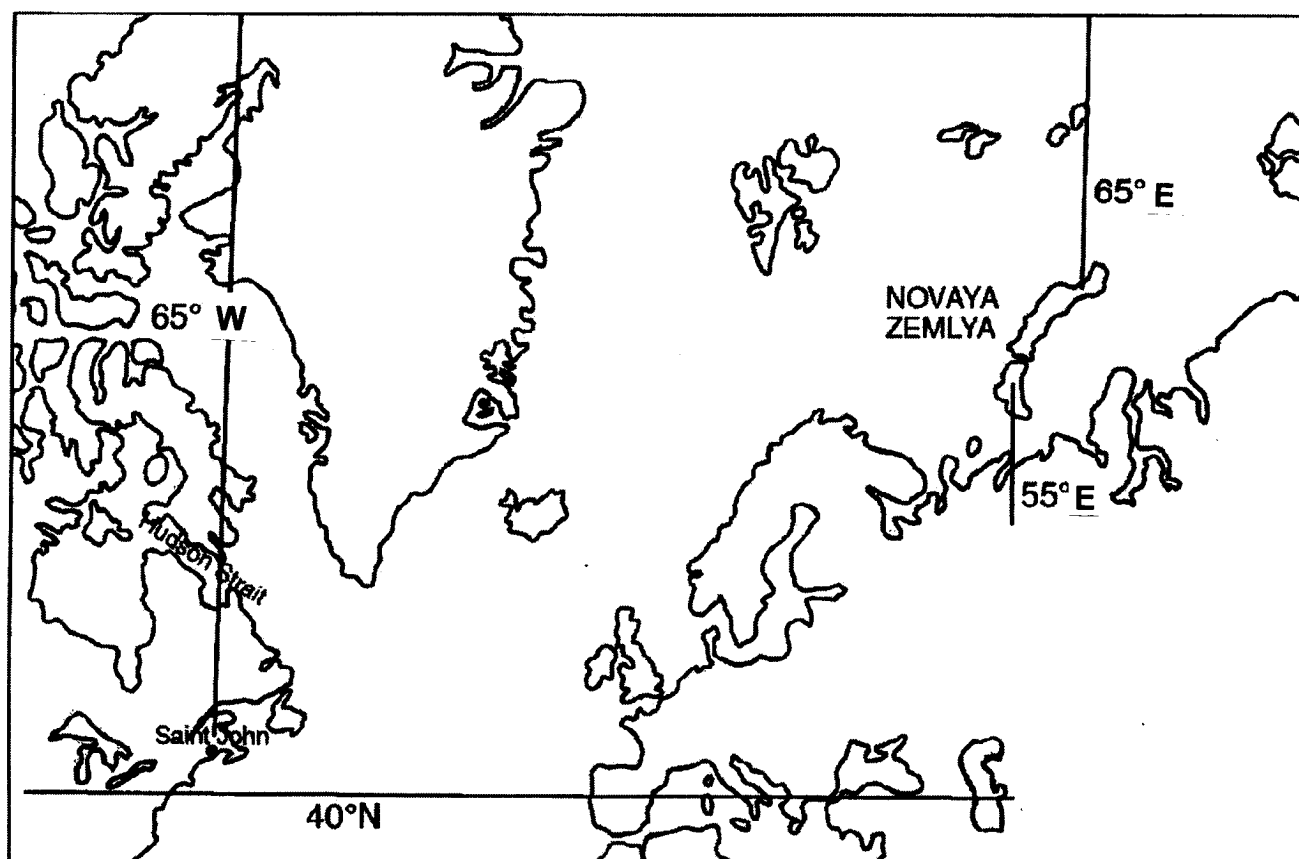
Waters south of the 40th northern parallel.

Waters east of 55 degrees east longitude south of Novaya Zemlya and 65 degrees east longitude north of Novaya Zemlya.

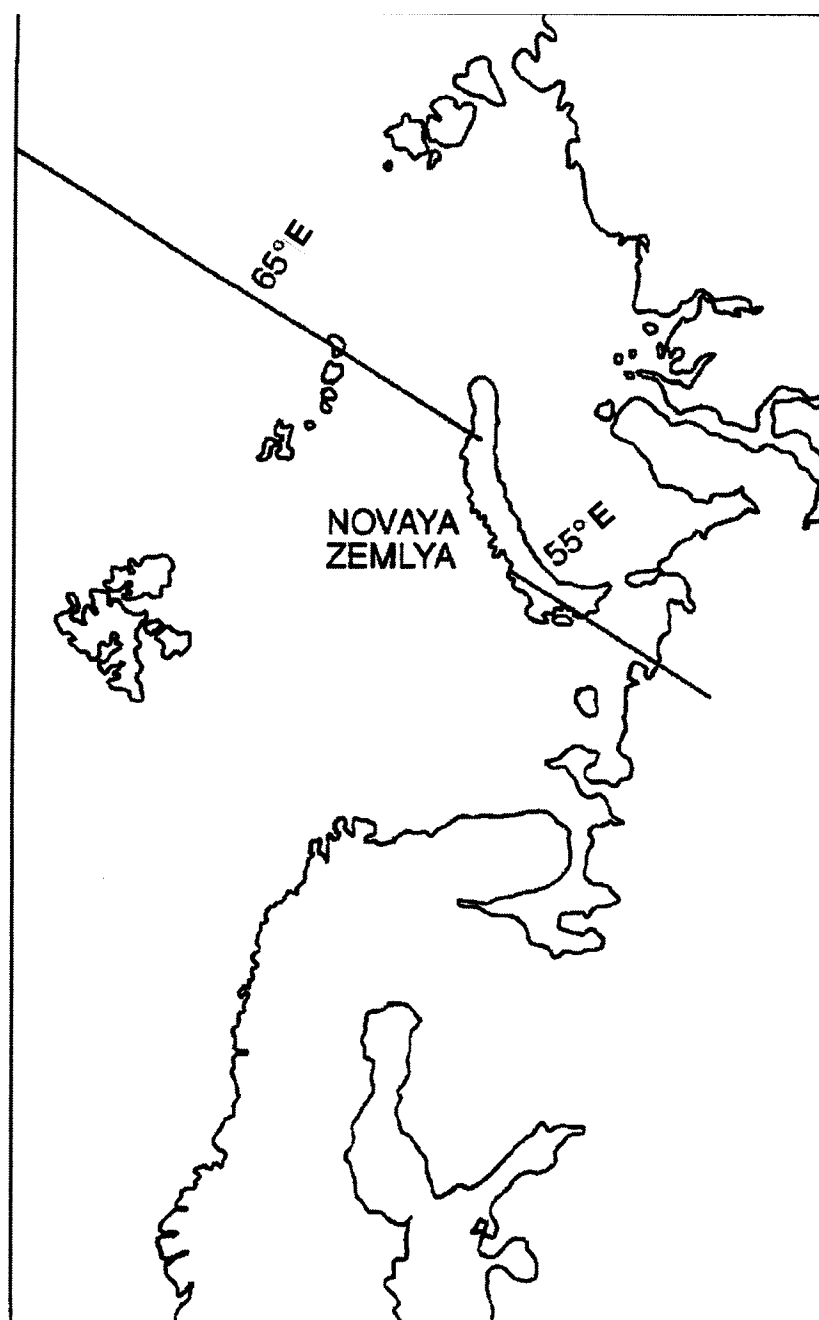
Waters west of 65 degrees west longitude north of Saint John and 75 degrees west longitude south of Saint John.

Waters with open/scattered drift ice concentration (4/10-6/10) or higher as shown on current ice charts issued by DNMI.

§ 17-3 Trading Limits for Fishing Vessels – Map No. 4



§ 17-3 Trading Limits for Fishing Vessels - Eastern Limit – Map No. 5



§ 17-3 Trading Limits for Fishing Vessels - Western Limit - Map No. 6

